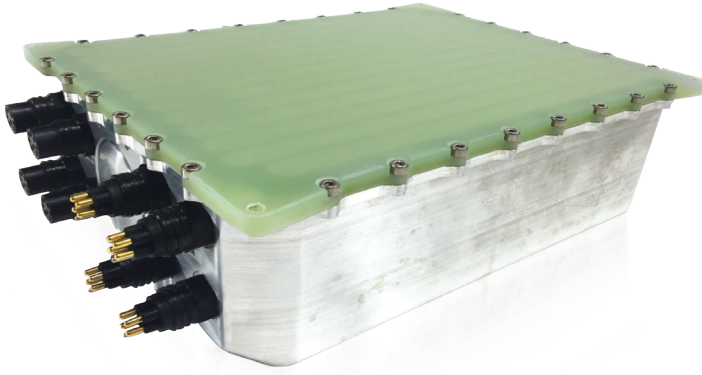




MAR-9600 Marine Battery



Rechargeable lithium-ion battery designed for harsh marine environments

Lithium-Ion Rechargeable Battery

Features and Benefits

- Utilizes solar charging integrated with maximum power point tracking (MPPT)
- Long performance life
- Proven battery management system (BMS)
 - Integrated with charge and discharge control
 - Cell balancing
- System management bus (SMBus) interface creating a smart battery system
- Integrated heater allows operation at -30°C (-22°F)
- Wide operational temperature range
- Hermetically sealed
- Vibration resistant
- Proven in demanding applications

Applications

- Harsh marine environments

Specifications

Part Number	MAR-9600
Nominal Cell Weight	8.16 kg (18 lb)
Dimensions (less terminal)	Width: 227 mm (8.94 in.) Height: 87 mm (3.43 in.) Length: 319 mm (12.58 in.)
Capacity	1339 Wh/120 Ah
Nominal Voltage	3.6 V
Voltage	12 V
Charge/Discharge Rate	15 A

MAR-9600 Marine Battery

